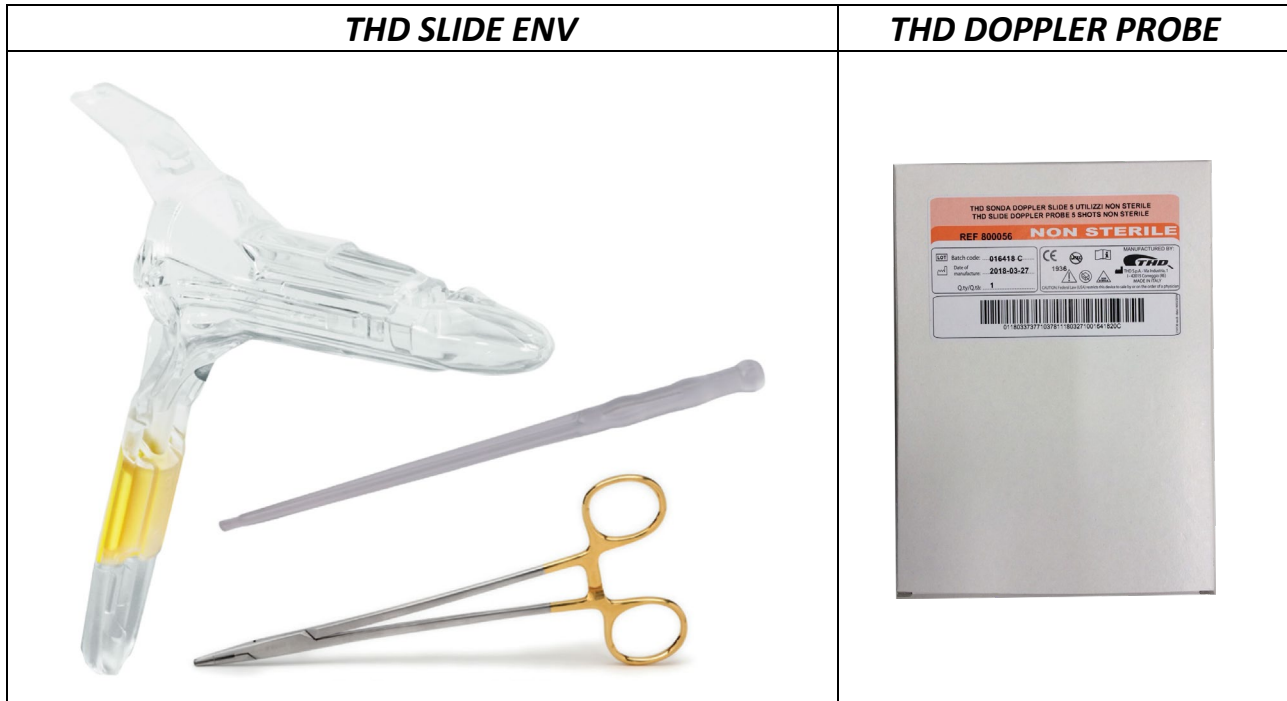




THD SLIDE ENV (LIGHT)



Use

THD Slide Kit provides all instruments needed to perform the THD procedure; treatment of varying grades of haemorrhoidal disease.

General description

THD Slide is specifically designed for immediate use with the THD Revolution/THD Evolution doppler dearterialiser. THD Slide anoscope/proctoscope is specifically designed for improving the THD procedure while treating the higher grades of the haemorrhoidal disease. The specific shape of the anoscope/proctoscope, which includes a port for the THD Doppler Probe, allows ligation and prolapse reduction with a single tool and reduces procedure time. The THD Slide anoscope/proctoscope is made of clear, medical grade, plastic which creates, in tandem with the use of the fibre optic tip, ideal lightning of the operative field. The THD Slide anoscope/proctoscope is designed to maintain the correct tension of the anal cavity during the procedure and presents placement for the THD needle holder. The supplied doppler probe lodges into the anoscope/proctoscope and is thereby positioned with the anal mucosa for an accurate detection of the haemorrhoidal arteries. The box also contains 1 re-usable, 10 shots, Doppler probes and 1 THD needle holder re-usable.



Dimensional Features	
THD SLIDE ENV (LIGHT)	
Internal Dimension	27x19 mm (1.063x0.748 in)
External Dimension	33x23 mm (1.299x0.905 in)
Operational Length	100 mm (3.937 in)
Operative Windows (Variable)	30x10 mm (1.181x0.393 in) minimum
Total Length	172 mm (6.772 in)
Handle length	105 mm (4.133 in)

THD Slide Env (Light)		
P/N	Q.ty	Description
800169-10	10	THD Slide Env (Light)
<i>include</i> 710009	10	THD Slide Env (sterile) in a bag – with 1 proctoscope, 1 pusher
<i>include</i> 700001	1	Doppler Probes with 10 activations each
<i>include</i> 750001	1	THD needle holder re-usable

Associated Equipment		
P/N	Qty	Description
800133	1	THD REVOLUTION (generator for doppler dearterialiser)
800000	1	THD EVOLUTION (generator for Doppler dearterialiser – previous model)