



# **THD** ProctoStation

The ultimate anorectal diagnostic tool

Document intended for Health Care Professionals only.  
Distribution of this document is restricted to the U.K.



# THD ProctoStation

The ultimate anorectal diagnostic tool



## BENEFITS

### ERGONOMIC

THD® ProctoStation offers a more ergonomic position for the provider. Its size allows comfortable exams even in smaller rooms. THD® ProctoStation is a complete option between outpatient and OR practice.

### FAST

Each exam can be done in under 10 minutes. THD® ProctoStation is ready for use and doesn't require previous calibration of the single instruments. Current services and pathways can require the patient to make 3 or more visits to the hospital to complete the diagnostic procedures and subsequent interpretations. THD® ProctoStation allows the clinician to offer first contact diagnostics and interpretation.

### EASY

Procedures can be performed as easily in the lateral decubitus, prone, or dorsal lithotomy position. The entire exam is user-friendly both for the clinician and the patient.

### COST EFFECTIVE

THD® ProctoStation is a self-contained, all-in-one modular platform which can connect to different plug & play peripherals to perform most diagnostic examinations utilizing the same hardware. One system can now be used to offer multiple diagnostic assessments eliminating the need for numerous capital equipment systems.

## UNTIL NOW:

### COLPOSCOPE

The colposcope was originally designed for cervical cancer screening. Although etiology (HPV), progression, macroscopic and microscopic appearance are the same, anal canal anatomy is different and this makes the use of the colposcope for anal cancer pre-lesion screening more difficult and uncomfortable.

### EAUS

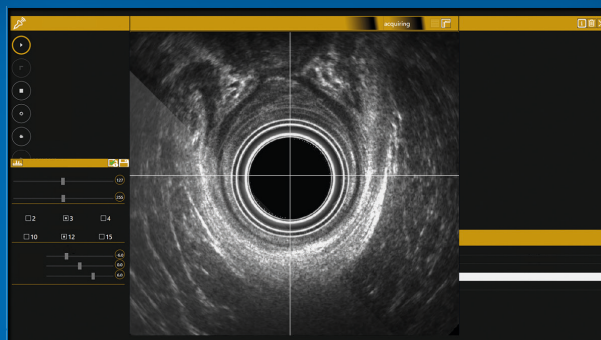
The traditional endoanal ultrasound is a static instrument available only in a dedicated environment, given its bulky size. It is cumbersome and delicate tool, so the transfer is complex between outpatient clinic and operative room.

### MANOMETRY

Conventional manometry, generally performed by means of multichannel liquid transduction, is carried out in a separate lab by a physician and requiring 30-40 minutes. It has shown numerous limitations mostly due to lack of standardization, need of calibration, and wide range of normal values and interpretation.



## THD Procto Software



Proctology integrated software which allows the proctologist to have all the diagnostic options normally used during the patients examination all in one suite.

The THD® Procto Software dedicated suite offers modules for the users and patients management and allows the proctologist to write a specific report for each examination.

The software is a medical device certified by the certifying body TUV Rheinland Italia (CE 1936).

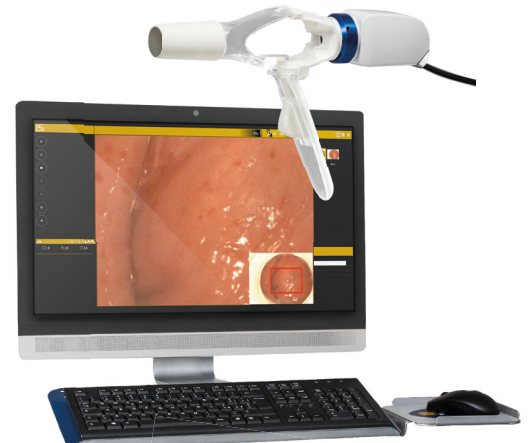
# THD<sup>®</sup> ProctoStation

The ultimate anorectal diagnostic tool

## HRA option

The THD<sup>®</sup> ProctoStation with HRA option is a compact instrument that provides high definition images of the anal canal and ano-rectal junction by combining a handheld HD camera with a medical grade all-in-one computer.

The disposable LED HRA proctoscope (THD<sup>®</sup> Light-Scope Procto HRA) complements the THD<sup>®</sup> ProctoStation by eliminating the need for external beam illumination.



## EAUS option

360-degree ultrasound probe (USB connected) offers a visualization of the pelvic floor and sphincteric muscles.

It allows dynamic imaging of the sphincteric complex for the anatomical and functional assessment that is required in the treatment of fecal incontinence, obstructed defecation syndrome, fistula and abscesses, obstetric injury or Crohn's disease.



## CLINICAL ANORECTAL MANOMETRY option

Clinical Anorectal Manometry is directed at overcoming many of the alternative technology issues, because it is directly accessible to the physician, and not simply interpreted by an external clinician. Correlating manometric data to patients' symptoms is simple, rapid and easily repeatable, thus becoming an integral part of the diagnostic pathway and allowing for monitoring the effects of rehabilitation or surgery. Standardized and repeatable data are immediately available to the user for an effective curve interpretation (Wave Concept) in a variety of pathological conditions.

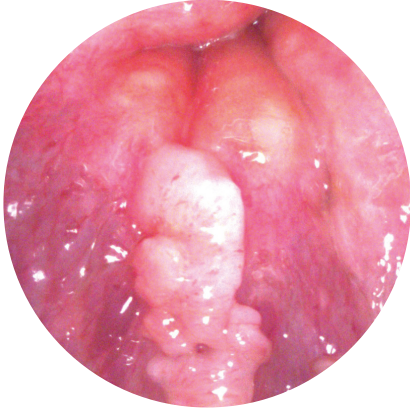




# THD ProctoStation

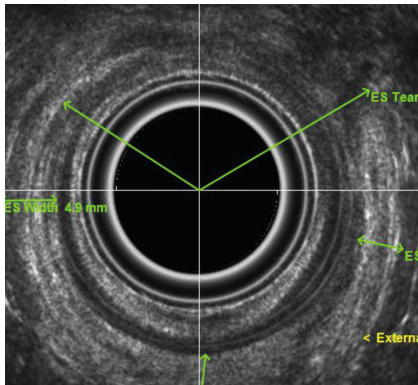
## INTEGRATED PERIPHERALS

### THD HRA CAMERA 2.0 + THD® Light-Scope PROCTO HRA



- High resolution videocamera up to 39x of magnification
- All-in-One touchscreen PC
- Direct comparison of current vs previous conditions
- Disposable LED HRA Proctoscope (THD® Light-Scope Procto HRA), self illuminated with integrated LED source
- Wide lateral window for easy access (biopsy/treatment)
- Outpatient and OR use

### THD EAUS PROBE 12MHZ



- Two dimensional 360 degrees rotating array of ultrasonic crystals
- Frequency average of 12 MHz, tuning from 10 to 15 MHz
- Full control of brightness, contrast, depth, frequency, gain
- Linear, angle and volume measurement
- Intra-operative use
- USB connection

### THD® Anopress + THD® PressProbe & THD® SensyProbe



- The portable solution for Clinical Anorectal Manometry
- THD® PressProbe has an ergonomic grip and a completely atraumatic profile to ensure minimum discomfort for the patient
- THD® SensyProbe offers the same features of THD® PressProbe with the additional capability to perform RAIR and rectal sensation investigation
- Quick and accurate
- For additional information refer to the THD® Anopress literature

# SPECIFICATIONS

## **THD** ProctoStation

Part No. 800198-1

Includes All-in-one touchscreen computer, THD® Procto Software, cart to house computer and additional components, insulation transformer



## **THD** HRA Camera 2.0

Part No. 800227-1

Includes High resolution camcorder, remote foot switch for image/video capture



## **THD** Light-Scope Procto HRA

Part No. 800191-10

Includes THD pack of 10 THD® Light-Scope Procto HRA, camera adapters and protection covers



## **THD** EAUS Probe 12MHZ

Part No. 800179-1

Includes Endo Anal UltraSound probe, remote foot switch for image/video capture



## **THD** Anopress

Part No. 800140-1

Includes Portable system for Anorectal Manometry



## **THD** PressProbe

Part No. 800147-10

Includes THD pack of 10 THD® PressProbe in a single plastic envelope



## **THD** SensyProbe

Part No. 800192-15

Includes THD pack of 15 THD® SensyProbe, syringes and 3-way stopcocks in a single plastic envelope

