



AIN LESIONS TREATMENT

THD® ProctoStation anal intraepithelial neoplasia lesions treatment options

TABLE OF CONTENTS

Devices		
	THD DERM A942 HIGH FREQ. DESICCATOR	p. 2
THD800231	THD DERM A942 HIGH FREQ. DESICCATOR	p. 2
THD800211	THD A902 REUSABLE HANDPIECE HI. FREQ. DESICCATOR	p. 2
THD800212	THD 14-4010HB SMOKE EVAC. FUS. HI. FREQ. DESIC. TUBING KIT 8"	p. 2
THD800209	THD 13-5300 REUSABLE GROUNDING CABLE HI. FREQ. DESICCATOR	p. 3
THD800210	THD GBS-DB1031A DISP. GROUND. PADS HI. FREQ. DES. A4-5200	p. 3
	THD A1250 ESU (ELEC SURG UNIT)	p. 4
THD800182	THD A1250 ESU (ELEC SURG UNIT)	p. 4
THD800206	THD 14-2000 SMOKE EVAC FUSION HANDPIECE ESU	p. 4
THD800205	THD A1252C REUSABLE GROUNDING CABLE ESU	p. 4
THD800204	THD GBS-DM1040A DIS GROUNDING PADS ESU Z1253	p. 4
THD 800207	THD 14-4014 SMOKE EVAC FUSION SUCTION TUBING KIT - ESU	p. 5
THD800208	THD 14-4015 SMOKE EVAC TUBING	p. 5
	THD SMOKE EVACUATOR SE02-220	p. 6
THD800181	THD SMOKE EVACUATOR SE02-220	p. 6
THD800200	THD SF35 H REPLACEMENT FILTER PROCTOSTATION	p. 6
THD800201	THD SERS 2 REMOTE ACTIVATOR EZLINK	p. 6

Tips		
	THD FUSION FLEX 6"	p. 8
THD800216	THD 14-1036 FUSION FLEX 6" BALL 3MM	p. 8
THD800219	THD 14-1066 FLEX 6" BLADE	p. 9
THD800217	THD 14-1046 FUSION FLEX 6" BALL 5MM	p. 10
THD800220	THD 14-1045T FUSION FLEX 6" SUCT COAG TIP	p. 11
THD800218	THD 14-1056 FUSION FLEX 6" NEEDLE TIP	p. 12
	THD FUSION 2"	p. 13
THD800224	THD 14-1022 FUSION 2" BALL 5MM	p. 13
THD800222	THD 14-1002PA FUSION 2" PLASTIC BLADE	p. 14
THD800223	THD 14-1012 FUSION 2" NEEDLE TIP	p. 15

Use with THD® ProctoStation		
THD800198-1	THD® PROCTOSTATION	p. 16
THD800191-10	THD® LIGHT-SCOPE PROCTO HRA	p. 17
THD 800227-1	THD® HRA CAMERA 2.0	p. 17

AIN LESIONS TREATMENT

THD® ProctoStation anal intraepithelial neoplasia lesions treatment options

THD SMOKE EVACUATOR SE02-220
(THD800181)

THD A1250 ESU (ELEC SURG UNIT)
(THD800182)



THD DERM A942 HIGH FREQ. DESICCATOR
(THD800231)

TIPS

BENEFITS

SAFE

Smoke-Evac Fusion is a simple solution for removing surgical smoke before it escapes. Combine industry-standard electrosurgical performance with superior suction technology to protect your team. Suction toxic smoke plumes from the source with the Smoke-Evac Fusion System and your lungs will thank you.

FAST

Clear your field of vision while you work and you will finish procedures faster and more efficiently. The Smoke-Evac Fusion suctions through the probe to clear the smoke without blocking your view. No more waiting for the smoke to clear!

COST EFFECTIVE

The Smoke-Evac Fusion Proctostation system is a low-cost treatment system for a wide range of procedures that can be used in your office. One system that fits all your electrosurgical and suctioning needs in an affordable package.

THD DERM A942 HIGH FREQ. DESICCATOR



THD800231

The Derm 942 High Frequency Desiccator is a low-power electrosurgical unit designed for the office setting. This low-maintenance unit is perfect for treatment of anal dysplasia and other High Resolution Anoscopy procedures. The power can be adjusted up to 40 watts and has 1/10th watt increments in the first 10 watts to allow for usage in a wide range of specialties. Autoclavable Hand Piece with power-switching buttons (800211) and Stainless Steel Stand for mounting on cart are included.

TECHNICAL SPECIFICATIONS

Height: 18.8 cm	Depth: 10.5 cm	Line Voltage: 100-240 VAC	Output Frequency: 328-429 kHz
Width: 22.8 cm	Weight: < 2.26 kg	Line Frequency: 50-60 Hz	

THD A902 REUSABLE HANDPIECE HI. FREQ. DESICCATOR

The Reusable Hand Piece (800211) a 3-button hand piece intended to be used with the Derm 942 High Frequency Desiccator (800231).

Use the blue button for activating the monopolar output. Use the up-down buttons to remotely adjust the power settings of the Derm 942 High Frequency Desiccator (800231). Item is steam autoclavable up to 25 times. Sold with the unit and also separately.



THD800211

THD 14-4010HB SMOKE EVAC. FUS. HI. FREQ. DESIC. TUBING KIT 8"

For simultaneous evacuation of smoke while using the Derm 942 High Frequency Desiccator, attach the Smoke-Evac Fusion High Frequency Desiccator Tubing Kit (800212) to the tip of the Autoclavable 3-Button Hand Piece (800211) and with Smoke-Evac Fusion Probes.

Attach 9mm connector to Smoke-Evacuator (800181) using the corresponding port. Item is disposable.



THD800212

THD 13-5300 REUSABLE GROUNDING CABLE HI. FREQ. DESICCATOR

The Derm 942 High Frequency Desiccator (800231) can be used with or without a grounding cable and pad.

To avoid unforeseen shocks to provider or patient, the Reusable Grounding Cable (800209) can be plugged into the Patient Plate port of the Derm 942 High Frequency Desiccator and used in conjunction to the Disposable Grounding Pads (800210). This item is tested for 100 uses. Item sold separately.



THD800209

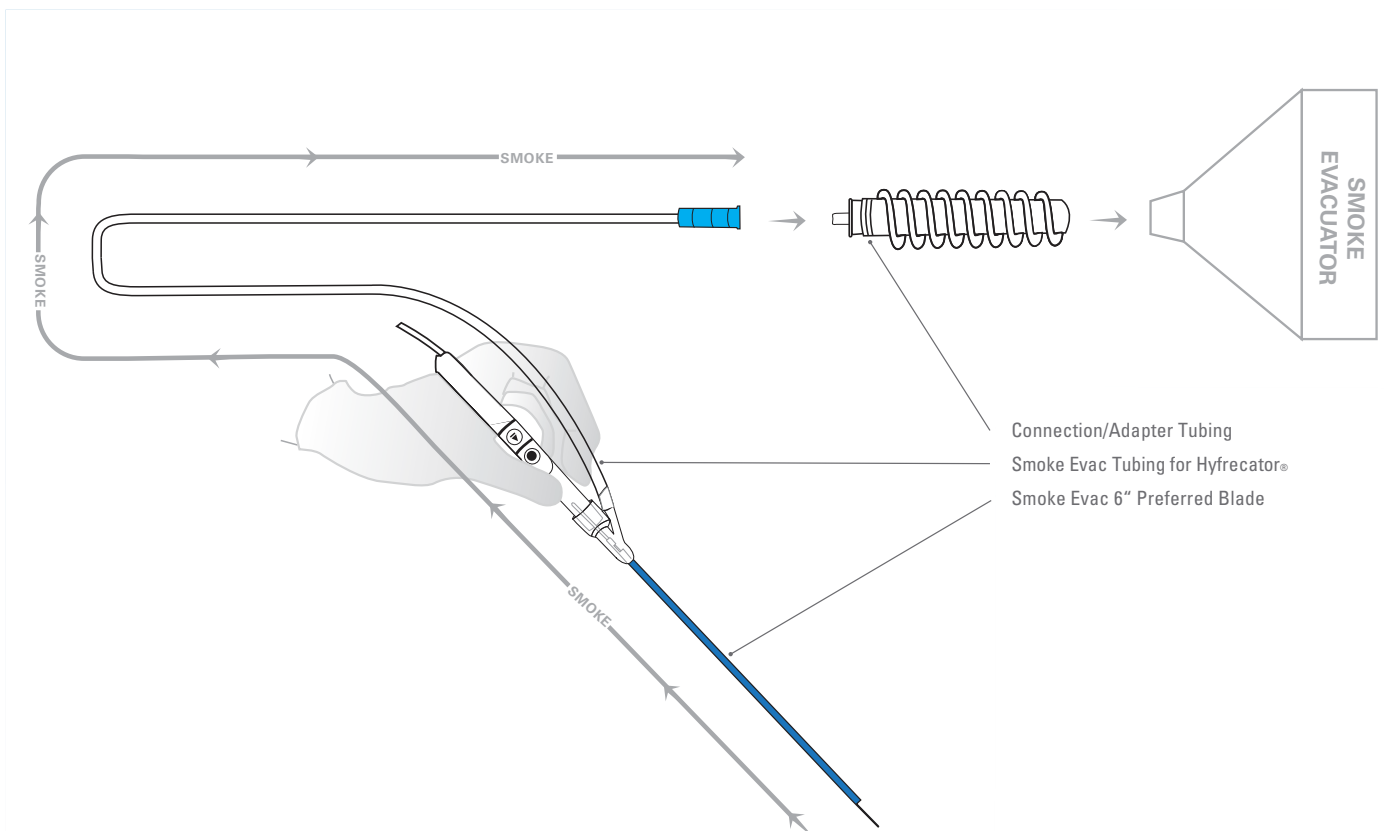
THD GBS-DB1031A DISP. GROUND. PADS HI. FREQ. DES. A4-5200

Disposable Grounding Pad (800210) is intended to be used with the Reusable Grounding Cable (800209) to ground the patient without physical contact from the provider.

This pad works to disperse the energy from the Derm 942 High Frequency Desiccator and return it safely to the machine without any painful shocks to provider or patient. Item sold separately.



THD800210



THD A1250 ESU (ELEC SURG UNIT)



THD800182

The A1250 Electrosurgical Unit (800182) is the electrosurgery solution for operating rooms and surgery centers who need a multipurpose unit for monopolar and bipolar surgical procedures. This electrosurgical unit features 5 common energy outputs with up to 120 watts of power: Cut, Blend, Coagulation, Fulguration, and Standard Bipolar.

TECHNICAL SPECIFICATIONS

Height: 15.2cm	Depth: 30.5cm	Line Voltage: 100-240 VAC	Output Frequency: 350-600 kHz
Width: 26cm	Weight: < 4Kg	Line Frequency: 50-60 Hz	

THD 14-2000 SMOKE EVAC FUSION HANDPIECE ESU

The Smoke-Evac Fusion Hand Piece (800206) is low-profile electrosurgical pencil with an integrated smoke channel. This push-button hand piece has two standard buttons: Cut/Blend (Yellow) and Coagulation/Fulguration (Blue). Item is intended to be used in conjunction with Smoke-Evac Fusion Probes to provide a smoke-free surgical environment. Item is disposable and sold separately.



THD800206

THD A1252C REUSABLE GROUNDING CABLE ESU

The Reusable Grounding Cable – ESU (800205) is used in conjunction with the Disposable Grounding Pads – ESU (800204) to ensure a safe, grounded electrosurgical procedure. Bovie's neutral electrode monitoring (NEM) increases patient safety by automatically detecting when Cable or Pad are not connected properly. Item has been tested for 100 uses. Item is included and replacements are available separately.



THD800205

THD GBS-DM1040A DIS GROUNDING PADS ESU Z1253

The Disposable Grounding Pads – ESU (800204) are used with the Reusable Grounding Cable – ESU (800205) to provide a safe and grounded electrosurgical procedure. This split grounding pad features adhesive gel to ensure proper patient connectivity and minimize electrical shocks and burns when properly applied. Item is sold separately.



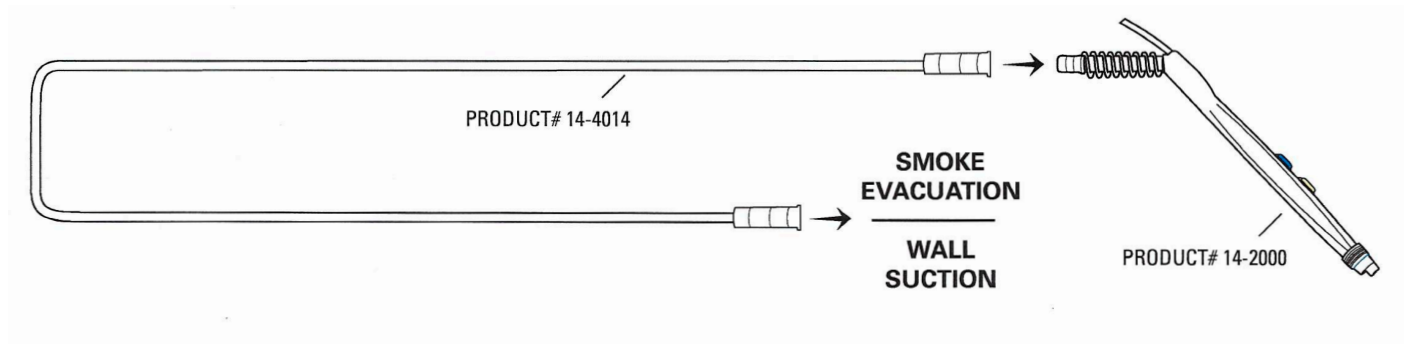
THD800204

THD 14-4014 SMOKE EVAC FUSION SUCTION TUBING KIT - ESU

The Smoke-Evac Fusion Suction Tubing Kit (800207) is an 8 foot long tubing set with suction connectors at both ends. Connectors are designed to fit male ports 8-10mm. Tubing kit is intended for evacuation of electrosurgical aerosols and gases. Not intended for use with fluids. Use tubing kit in conjunction with Smoke-Evac Fusion Hand Piece (800206) and Smoke-Evac Fusion Probes for a smoke-free surgical field. Item is disposable and sold separately.



THD800207

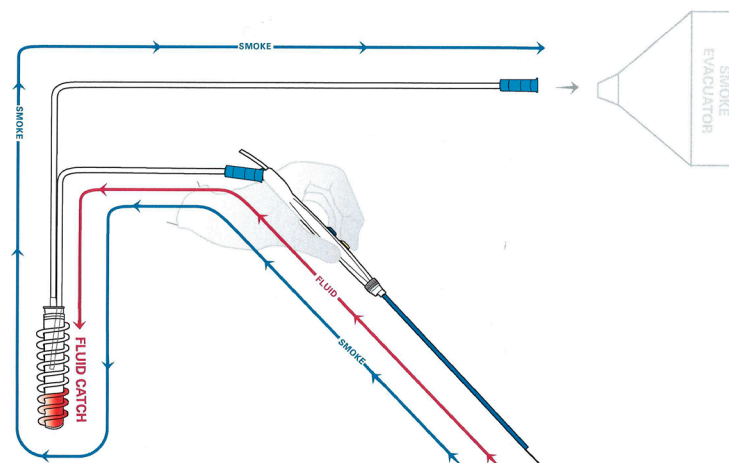


THD 14-4015 SMOKE EVAC TUBING

The Smoke-Evac Fusion Tissue Catch Tubing Kit (800208) is an 8 foot long tubing set with suction connectors at both ends. Connectors are designed to fit male parts 8-10mm. Tubing kit is intended for evacuation of electrosurgical aerosols, gases, and fluids. Use in conjunction with Smoke-Evac Fusion Hand Piece (800206) and Smoke-Evac Fusion Probes for smoke-free surgical field and integrated fluid suction system without ruining Smoke-Evacuator Filter. Item sold separately.



THD800208



THD SMOKE EVACUATOR SE02-220



THD800181

The Bovie Smoke Shark II is a light-weight, ultra-quiet, and compact smoke evacuator that features 3 ports for maximum versatility of connections. It is intended to reduce the risk of electrosurgery by removing potentially harmful surgical smoke from the air. An indicator level on the front panel allows for quickly checking your filter life. The Smoke Shark II also features a simple, push-button fan adjustment with LED indicator to easily identify the current setting. Included foot switch makes hands-free activation simple. For best results, use with Smoke-Evac Fusion Hand Piece (800206).

TECHNICAL SPECIFICATIONS

Height: 15.2 cm
Width: 27.9 cm

Depth: 39.4 cm
Weight: 4.3 kg

Line Voltage: 240 VAC
Line Frequency: 50-60 Hz

Noise Level: > 55 dBA

THD SF35 H REPLACEMENT FILTER PROCTOSTATION

The 35 Hr Replacement Filter (800200) is a 4-stage filter designed to filter aerosols, gross particulate, and micro-organisms from 0.1 – 0.2 microns at an efficiency of 99.999%.

A carbon filter ensures the removal and absorption of toxic gases and odors. The 3-port design accommodates a variety of tubing sizes. Item is sold separately.



THD800200

THD SERS 2 REMOTE ACTIVATOR EZLINK

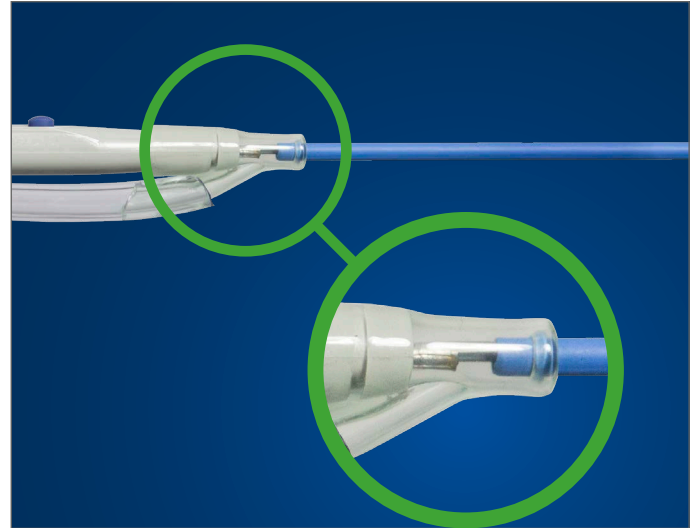
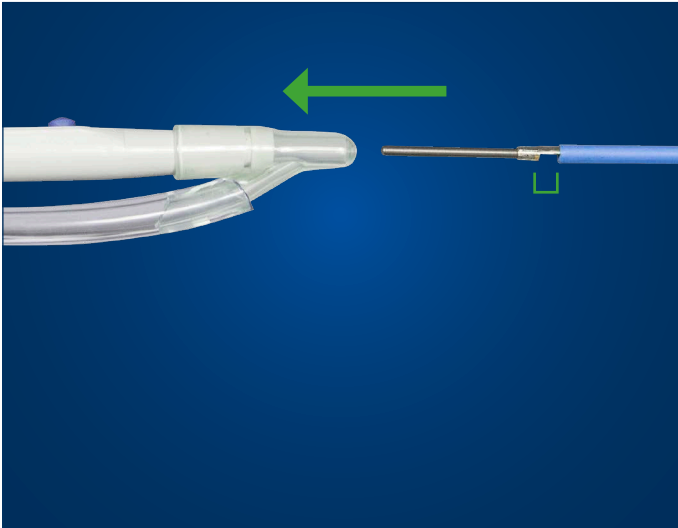
The EZLINK Remote Activator allows for automatic activation of the Smoke Shark II when connected with Electrosurgical Unit (800182) or High Frequency Desiccator (800231). Adjustable delay can be set from 0 to 10 seconds after deactivation of electrosurgical device to ensure capture of residual smoke plume. Item is sold separately.



THD800201

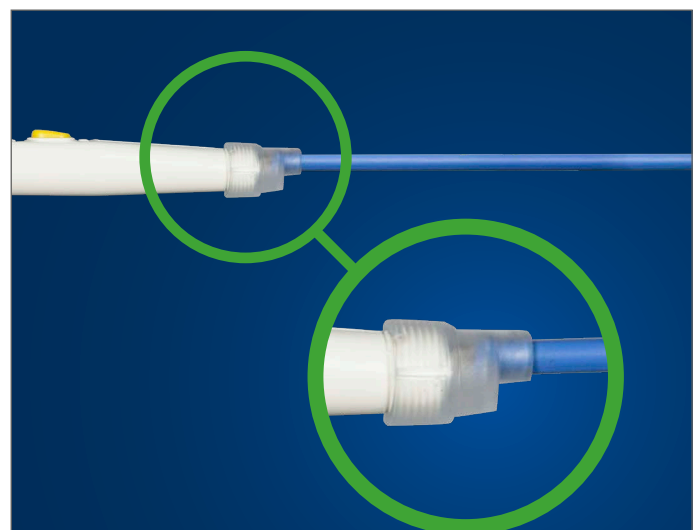
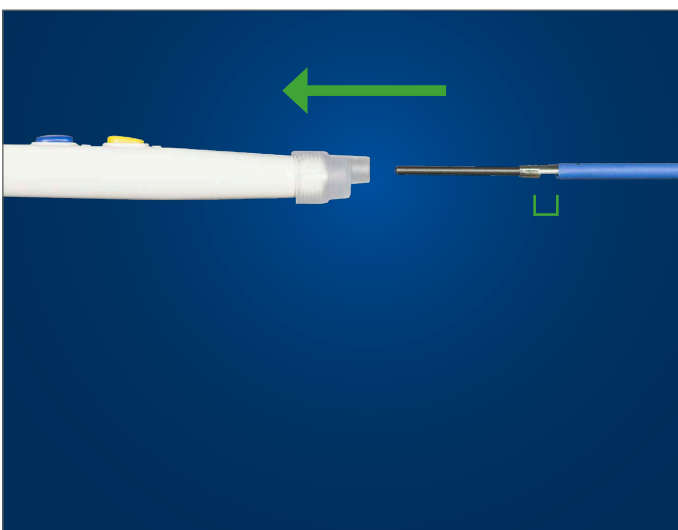
Connecting the probe and the handpiece

WITH HIGH FREQUENCY DESICCATOR



Place Smoke-Evac Fusion High Frequency Desiccator Tubing Kit (800212) onto hand piece with Y-connector on the distal end of the hand piece. Insert probe into hand piece through the hole in the Y-connector until tip of Y-connector is depressed. The flute notch on the probe should be pointed towards the Tubing Kit.

WITH ELECTROSURGICAL GENERATOR



Insert probe into Smoke-Evac Fusion Hand Piece (800206) until blue is visible in the collar of the nose of the hand piece. The flute notch on the probe should be pointed away from the buttons of the hand piece.

THD 14-1036 FUSION FLEX 6" BALL 3MM



THD800216

The Smoke-Evac Fusion Flexible 6" 3mm Ball is a stainless steel electrosurgical probe that features a hollow center to allow for smoke evacuation from directly behind the tip.

The Smoke-Evac Fusion Flexible 6" 3mm Ball probe is used to seal blood vessels during a procedure through electrothermal coagulation.

This probe is also used to treat anal dysplasia in High Resolution Anoscopy (HRA) cases.

This flexible probe allows for providers to achieve virtually infinite angles of treatment. Harmful surgical smoke will be suctioned through the tip of the electrode.

As char accumulates from desiccated tissue, clean off with moistened gauze.

USE WITH SMOKE EVACUATOR



Without smoke evacuator



With smoke evacuator

This probe must be used with the Smoke-Evac Fusion Hand Piece (800206) or a specialty tubing kit (800212). For best results, use with THD Light-Scope Procto HRA (800191) and bend probe ~2cm from the hand piece to desired angle. Always activate smoke-evacuator during treatment to ensure optimal visibility and safety.

THD 14-1066 FLEX 6" BLADE



The Smoke-Evac Fusion Flexible 6" Blade is a stainless steel electrothermal probe that features a hollow center to allow for smoke evacuation from directly behind the tip.

The Smoke-Evac Fusion Flexible 6" Blade is a Teflon-coated, stainless steel blade that is used to ablate lesions in High Resolution Anoscopy (HRA) cases using electrothermal fulguration.

This flexible probe allows providers to achieve infinite angles of treatment.

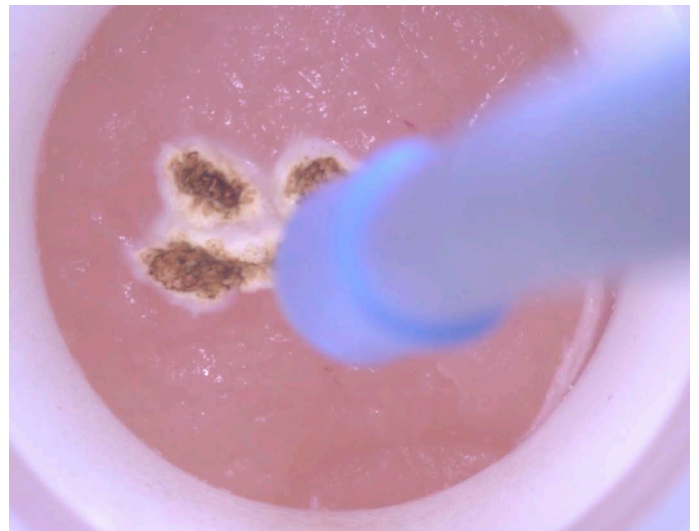
Harmful surgical smoke will be suctioned through the tip of the electrode.

As char accumulates from desiccated tissue, clean off with moistened gauze.

USE WITH SMOKE EVACUATOR



Without smoke evacuator



With smoke evacuator

This probe must be used with the Smoke-Evac Fusion Hand Piece (800206) or a specialty tubing kit (800212). For best results, use with THD Light-Scope Procto HRA (800191) and bend probe ~2cm from the hand piece to desired angle. Always activate smoke-evacuator during treatment to ensure optimal visibility and safety.

THD 14-1046 FUSION FLEX 6" BALL 5MM



The Smoke-Evac Fusion Flexible 6" 5mm Ball is a stainless steel electrothermal probe that features a hollow center to allow for smoke evacuation from directly behind the tip.

The Smoke-Evac Fusion Flexible 6" 5mm Ball is used to seal larger blood vessels using electrothermal coagulation.

This flexible probe can also be used to treat more extensive cases of anal dysplasia in High Resolution Anoscopy (HRA) cases.

This flexible probe allows for providers to achieve infinite angles of treatment. Harmful surgical smoke will be suctioned through the tip of the electrode. As char accumulates from desiccated tissue, clean off with moistened gauze.

USE WITH SMOKE EVACUATOR



Without smoke evacuator



With smoke evacuator

This probe must be used with the Smoke-Evac Fusion Hand Piece (800206) or a specialty tubing kit (800212). For best results, use with THD Light-Scope Procto HRA (800191) and bend probe ~2cm from the hand piece to desired angle. Always activate smoke-evacuator during treatment to ensure optimal visibility and safety.

THD 14-1045T FUSION FLEX 6" SUCT COAG TIP



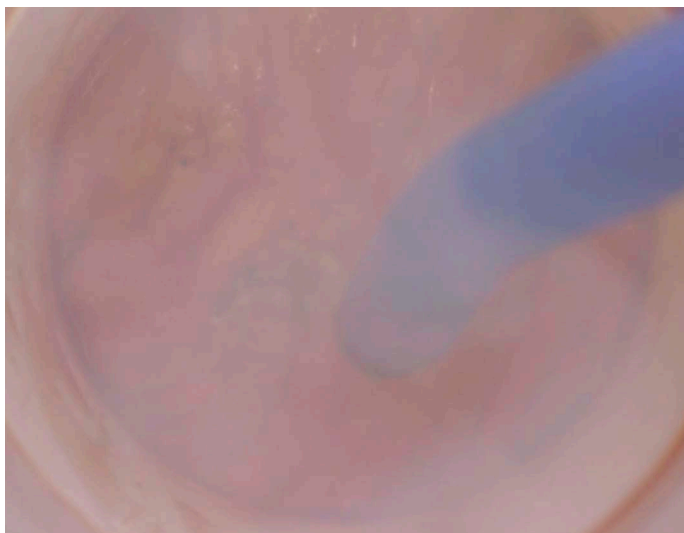
The Smoke-Evac Fusion 6" Flexible Suction Coag Tip is a stainless steel electro-surgical probe that features a hollow center to allow for smoke evacuation from directly behind the tip.

The Smoke-Evac Fusion 6" Flexible Suction Coag Tip is a Teflon-Coated tip that is used to suction both smoke and fluids while sealing blood vessels to allow for faster hemostasis.

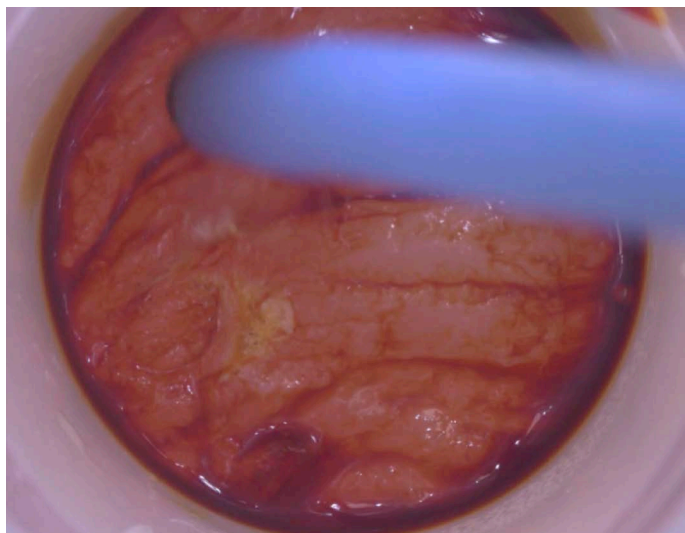
This flexible probe allows providers to achieve infinite angles of treatment.

Harmful surgical smoke and fluids will be suctioned through the tip of the electrode.

USE WITH SMOKE EVACUATOR



Without smoke evacuator



With smoke evacuator

If using an electro-surgical generator, this probe must be used with the Smoke-Evac Fusion Hand Piece (800206) and Tissue Catch Tubing Kit (800208). Recommended for use with THD Light-Scope Procto HRA (800191).

THD 14-1056 FUSION FLEX 6" NEEDLE TIP



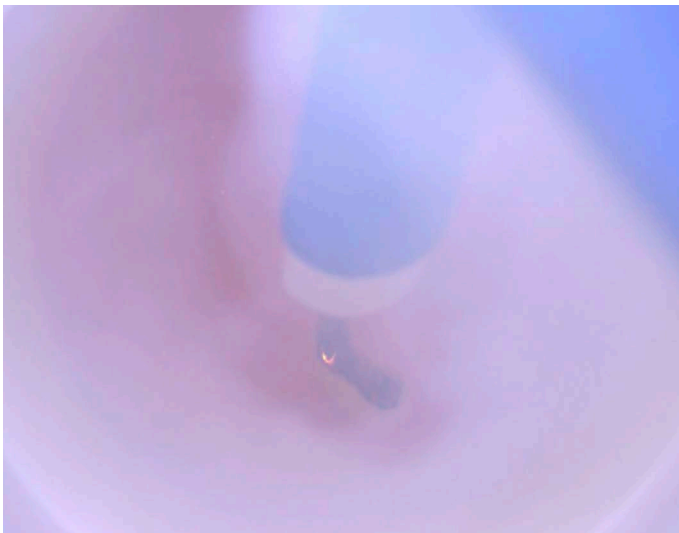
The Smoke-Evac Fusion Flexible 6" Needle Tip is a stainless steel electro-surgical probe that features a hollow center to allow for smoke evacuation from directly behind the tip.

The Smoke-Evac Fusion Flexible 6" Needle Tip is used for removal of condylomas in High Resolution Anoscopy (HRA) cases.

The fine tip allows for cutting through tissue even when using a high frequency desiccator. This flexible probe allows for providers to achieve infinite angles of treatment.

Harmful surgical smoke will be suctioned through the tip of the electrode. As char accumulates from desiccated tissue, clean off with moistened gauze.

USE WITH SMOKE EVACUATOR



Without smoke evacuator



With smoke evacuator

This probe must be used with the Smoke-Evac Fusion Hand Piece (800206) or a specialty tubing kit (800212). For best results, use with THD Light-Scope Procto HRA (800191) and bend probe ~2cm from the hand piece to desired angle. Always activate smoke-evacuator during treatment to ensure optimal visibility and safety.

THD 14-1022 FUSION 2" BALL 5MM



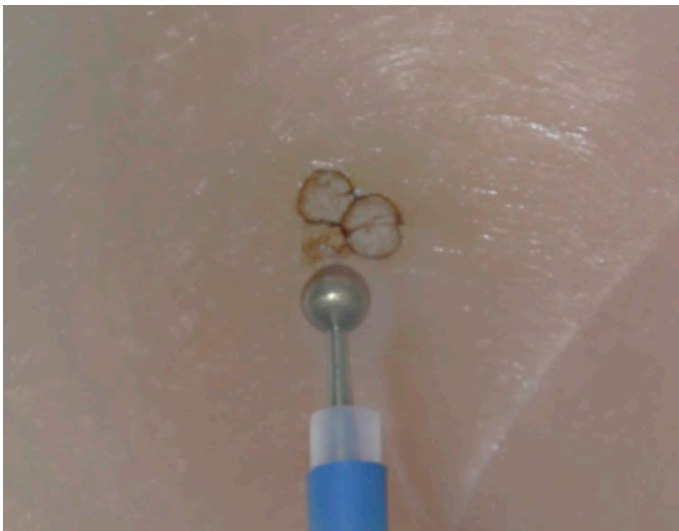
The Smoke-Evac Fusion 2" 5mm Ball is a stainless steel electrocautery probe that features a hollow center to allow for smoke evacuation from directly behind the tip.

The Smoke-Evac Fusion 2" 5mm Ball Tip is used to seal larger blood vessels for perianal treatments using electrothermal coagulation.

This probe can be used to treat more extensive cases of perianal dysplasia when more blood is present in High Resolution Anoscopy (HRA) cases.

Harmful surgical smoke will be suctioned through the tip of the electrode. As char accumulates from desiccated tissue, clean off with moistened gauze.

USE WITH SMOKE EVACUATOR



Without smoke evacuator



With smoke evacuator

This probe must be used with the Smoke-Evac Fusion Hand Piece (800206) or specialty tubing kit (800212).

THD 14-1002PA FUSION 2" PLASTIC BLADE



The Smoke-Evac Fusion 2" Plastic Blade is a stainless steel electrosurgical probe that features a hollow center to allow for smoke evacuation from directly behind the tip.

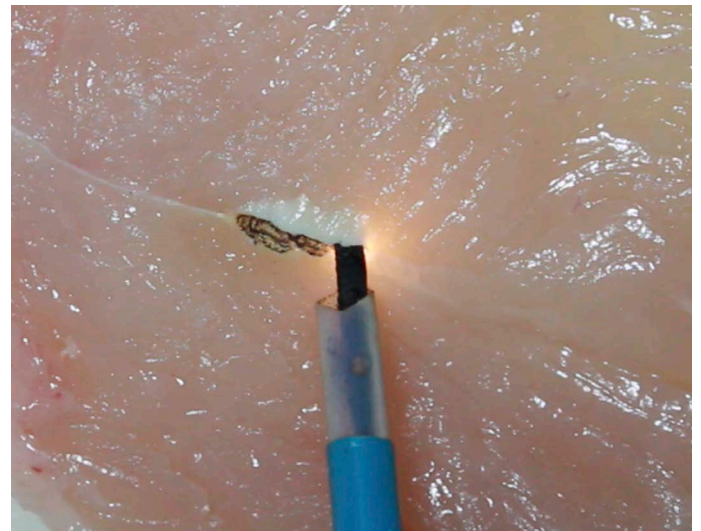
The Smoke-Evac Fusion 2" Plastic Blade is a Teflon-coated, stainless steel blade that is used to ablate perianal lesions in High Resolution Anoscopy (HRA) cases using electrothermal fulguration.

As char accumulates from desiccated tissue, clean off with moistened gauze.

USE WITH SMOKE EVACUATOR



Without smoke evacuator



With smoke evacuator

This probe must be used with the Smoke-Evac Fusion Hand Piece (800206) or a specialty tubing kit (800212).

THD 14-1012 FUSION 2" NEEDLE TIP



The Smoke-Evac Fusion 2" needle Tip is a stainless steel electrosurgical probe that features a hollow center to allow for smoke evacuation from directly behind the tip.

The Smoke-Evac Fusion 2" Needle Tip is used for removal of external condylomas in High Resolution Anoscopy (HRA) cases.

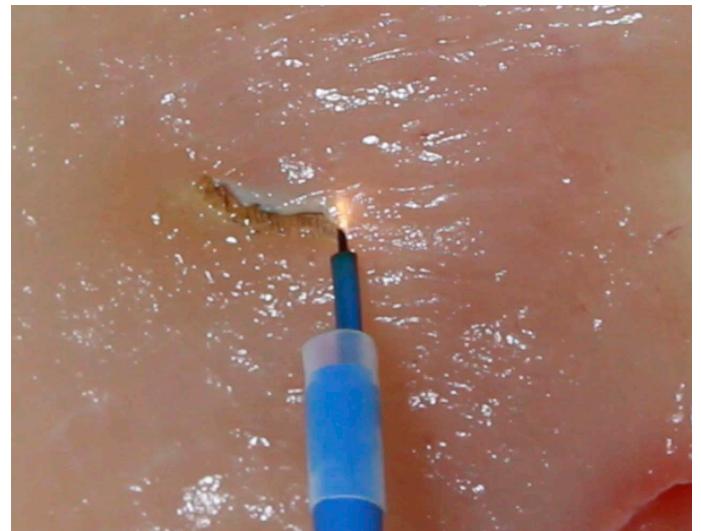
The fine tip allows for cutting through tissue even when using a high frequency desiccator.

As char accumulates from desiccated tissue, clean off with moistened gauze.

USE WITH SMOKE EVACUATOR



Without smoke evacuator



With smoke evacuator

This probe must be used with the Smoke-Evac Fusion Hand Piece (800206) or a specialty tubing kit (800212).

THD ProctoStation

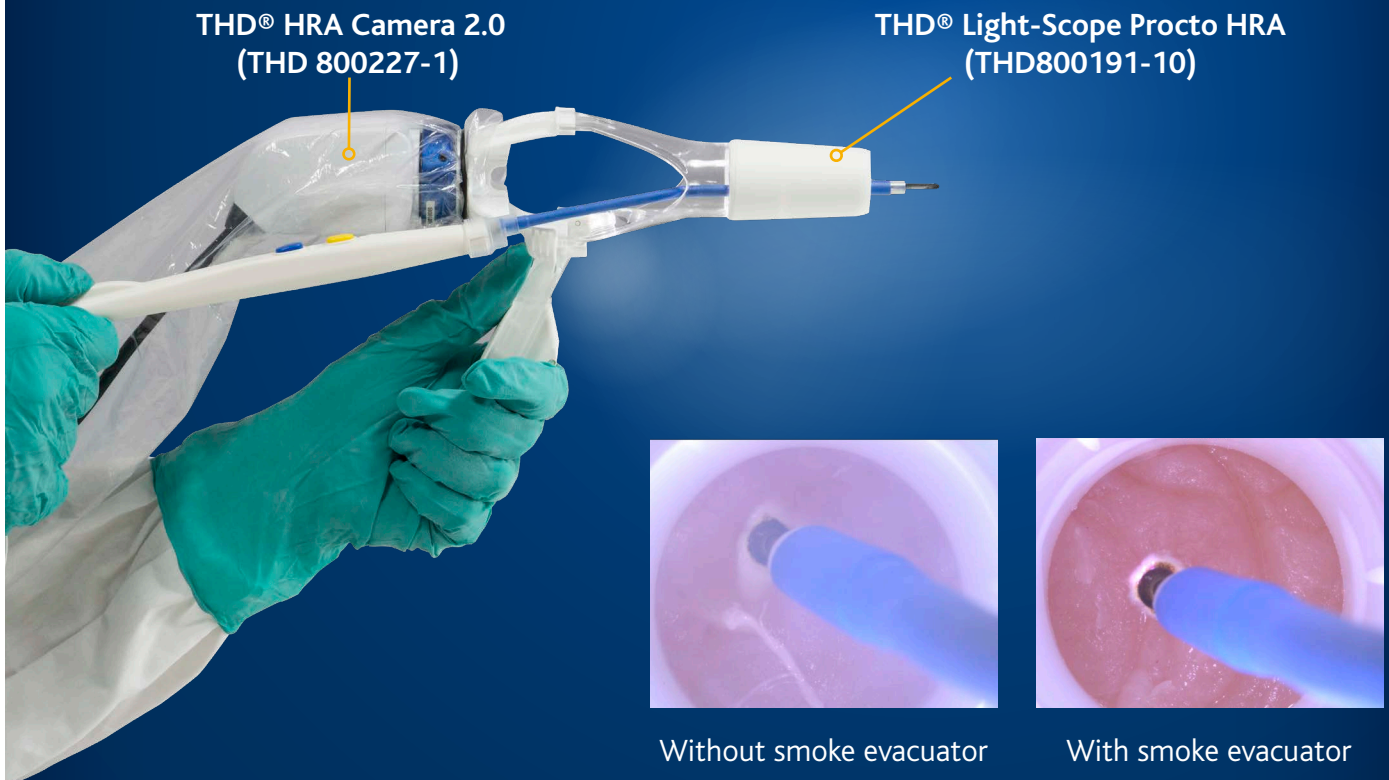
The ultimate anorectal diagnostic tool



THD® ProctoStation (THD800198-1) is a self-contained, all-in-one modular platform which can connect to different plug & play peripherals to perform most diagnostic examinations utilizing the same hardware. One system can now be used to offer multiple diagnostic assessments eliminating the need for numerous capital equipment systems.

THD® Light-Scope Procto HRA & THD® HRA Camera 2.0

The ultimate anorectal diagnostic tool



The THD® Light-Scope Procto HRA (THD800191-10) and the THD® HRA Camera 2.0 (THD 800227-1) offer a superior visualization of the anal canal with unmatched ease-of-use. When this is combined with the treatment flexibility and safety of the Smoke-Evac Fusion HRA treatment set-up, providers can diagnose and treat with one integrated system. All components in contact with patient are single-use to decrease contamination and facilitate quick turnover.

BENEFITS

SUCTIONS BOTH SMOKE AND FLUID (BLOOD)

All other smoke evacuation devices are limited to suctioning smoke only into a smoke evacuation filter. Many high cost filters are destroyed daily when blood is accidentally suctioned through these other devices. The SEF is designed to connect directly to suction for both smoke and fluid. A simple tubing kit is available for collection of blood and tissue to protect the smoke evacuator if required.

SUPERIOR VISUALIZATION

The best visualization available of any system without taking up extra space, which allows for use in limited space for minimally-invasive small incision access surgery as well as surgeries in a pocket.

WIDE RANGE

The Smoke-Evac Fusion Set-Up can be used in a wide range of procedures including anal ablations, warts, fistulas, and condylomas. Choose your preferred tip: the needle tip for fine cutting procedures, the ball tip for fast blood vessel-sealing, the Teflon-coated blade for accurate ablations, and the suction coagulation tip for procedures suctioning fluid without changing hand pieces. Electrodes for the Smoke-Evac Fusion are available in 2-6 inches long.

SPECIFICATIONS

THD DERM A942 HIGH FREQ. DESICCATOR

Part no. THD800231



Accessories & Spare Parts

PCS / BOX

THD800211	THD A902 REUSABLE HANDPIECE HI. FREQ. DESICCATOR	1
THD800212	THD 14-4010HB SMOKE EVAC. FUS. HI. FREQ. DESIC. TUBING KIT 8"	10
THD800209	THD 13-5300 REUSABLE GROUNDING CABLE HI. FREQ. DESICCATOR	1
THD800210	THD GBS-DB1031A DISP. GROUND. PADS HI. FREQ. DES. A4-5200	25

THD A1250 ESU (ELEC SURG UNIT)

Part no. THD800182



Accessories & Spare Parts

PCS / BOX

THD800206	THD 14-2000 SMOKE EVAC FUSION HANDPIECE ESU	10
THD800205	THD A1252C REUSABLE GROUNDING CABLE ESU	1
THD800204	THD GBS-DM1040A DIS GROUNDING PADS ESU Z1253	25
THD 800207	THD 14-4014 SMOKE EVAC FUSION SUCTION TUBING KIT - ESU	10
THD800208	THD 14-4015 SMOKE EVAC TUBING	10

THD THD SMOKE EVACUATOR SE02-220

Part no. THD800181



Accessories & Spare Parts

PCS / BOX

THD800200	THD SF35 H REPLACEMENT FILTER PROCTOSTATION	1
THD800201	THD SERS 2 REMOTE ACTIVATOR EZLINK	1

Also available

THD FUSION FLEX 6" TIPS

- 1) THD800216
- 2) THD800219
- 3) THD800217
- 4) THD800220
- 5) THD800218



THD FUSION 2" TIPS

- 6) THD800224
- 7) THD800222
- 8) THD800223



THD (UK) Ltd

Unit 3, Great Western Business Park, McKenzie Way,
Worcester, WR4 9PT, United Kingdom
Tel +44 (0) 1905 747 883 Fax +44 (0) 1905 330 295
www.thdlab.co.uk

