

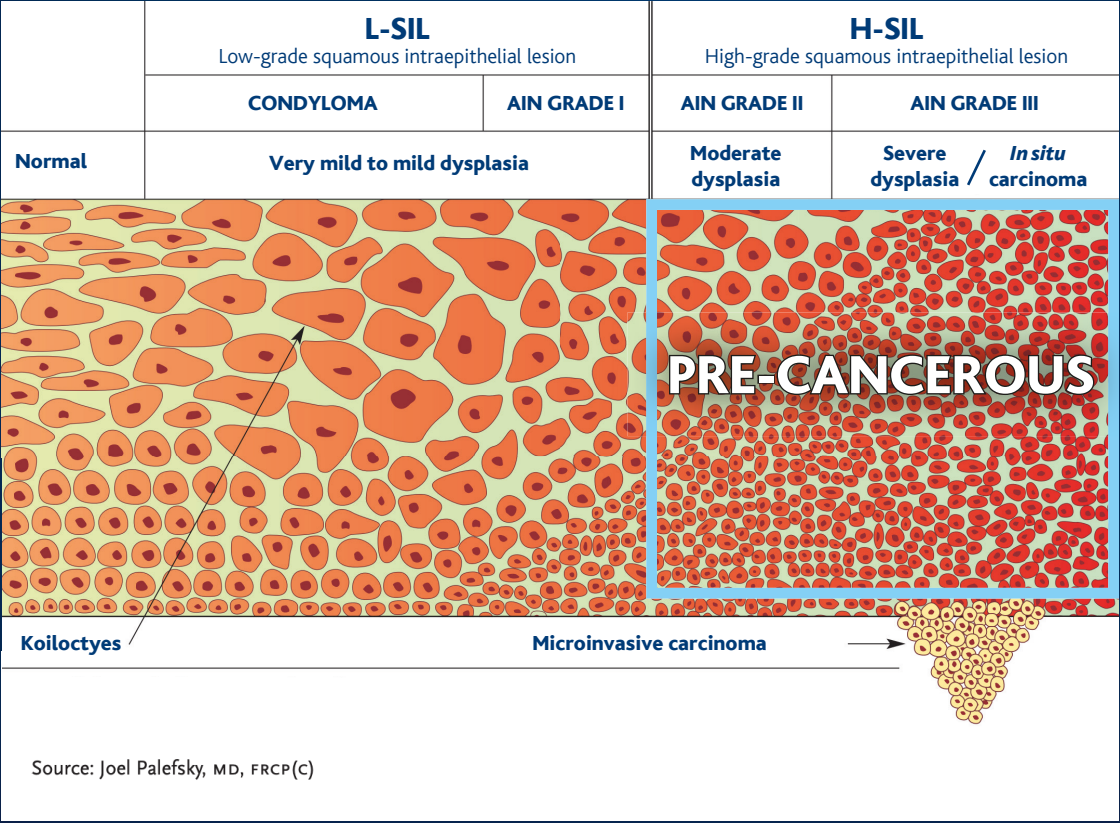
# ANAL SQUAMOUS CELL CARCINOMA

***THD* HRStation**

THD® HRStation: the ultimate system for High Resolution Anoscopy (HRA)



# LOW GRADE DISPLASIA AND PRECANCEROUS LESIONS



## ANAL SQUAMOUS CELL CARCINOMA (SCC)

High grade squamous intraepithelial lesion (H-SIL) can progress to squamous cell carcinoma of the anus (SCC).

Despite the low rate of anal cancer in the general population, it is associated with significant morbidity and mortality, and has been steadily increasing in incidence, nearly doubling in the last 25 years in high risk patients. [1]

[1] SEER Cancer Statistics Factsheets: Anal Cancer.  
National Cancer Institute

# 10 YEARS EXPERIENCE WITH THD® HRA PROCEDURE

## RESULTS AT INITIAL SCREENING

Exams	3300
Patients with High Risk factors (MSM, previous cervical cancer)	290
HR HPV positivity	82%
Detecion of -SIL	70%
Detection of H-SIL	43%
Detection of SCC (invasive 60% - SISCCA 40%)	4%

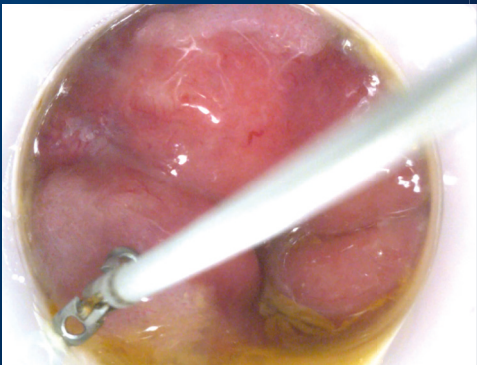
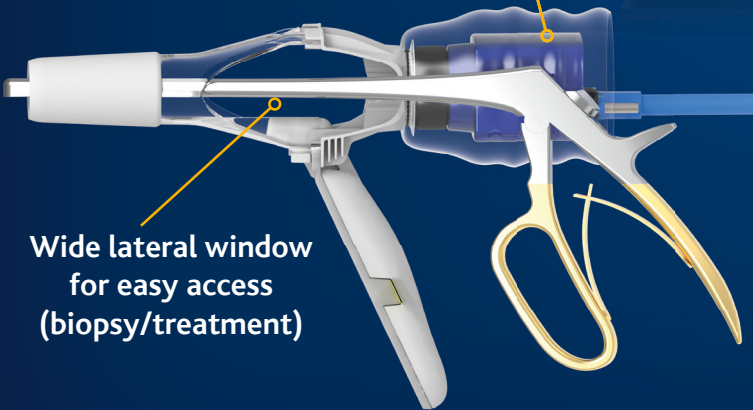
## RESULTS AT FOLLOW UP (10 yrs EXPERIENCE)

-SIL reappearance after treatment	47%
<b>H-SIL progression to SCC during follow up</b>	<b>0%</b>

Courtesy of Emanuel Cavazzoni, PhD: Università degli Studi di Perugia  
\*Procedure performed with THD® ProctoStation

THD® HRStation is the specific system for diagnosing and treating precancerous lesions of the anus. THD® HRStation is a system which is able to supply high-resolution videos and images (4K) of the anal canal and the perianal area.

The disposable THD® Light-Scope Procto HRA proctoscope complements the THD® HRStation by eliminating the need for an external light source. The large side windows on the camera connection give easy access to the area under examination for biopsies and ablative treatments.



# ANAL SQUAMOUS CELL CARCINOMA

## Aims

Early diagnosis and prevention have a major role in the management of anal cancer and its precursor lesions.

The progression from anal dysplasia to anal cancer is slow, this long interval allows for diagnosis and possible treatment of the lesions while they are still in a precancerous stage.

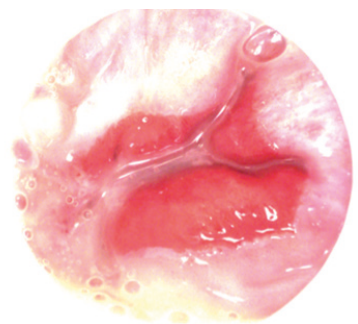
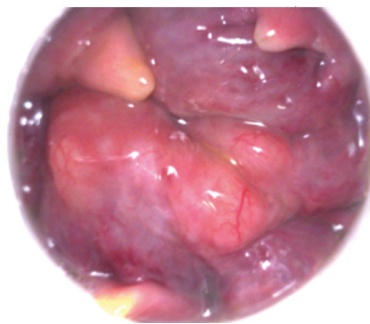
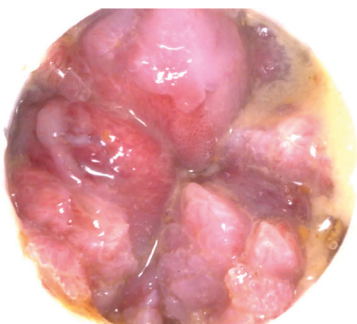
## THE AIM OF THE SCREENING IS:

- Find any HPV related lesion in the earliest possible stage in high risk population
- Exclude the presence of HPV induced lesion in high risk population
- Find and treat any existing anal SCC

## AVOID PROGRESSION FROM HPV INDUCED DYSPLASIA TO CANCER

## THE GOLD STANDARD

- High Resolution Anoscopy is the GOLD STANDARD for the screening of SCC in high risk patients
- Each high volume screening program for IMMUNOSUPPRESSED patients should have a HRA system
- Screening for Anal Cancer highly REDUCES the incidence of advanced disease and the relative need of INVASIVE TREATMENTS



# ANAL SQUAMOUS CELL CARCINOMA

## International Societies Guidelines

	ROUTINE SCREENING OF GENERAL POPULATION	ROUTINE SCREENING OF HIGHRISK INDIVIDUALS	ASSESSES MODALITIES FOR DIAGNOSIS	SPECIFIC MODALITIES ASSESSED
AMERICAN SOCIETY OF COLON AND RECTAL SURGEONS	No recommendation	No recommendation	Screening and surveillance	Anal Pap test, high-resolution anoscopy (HRA)
EUROPEAN SOCIETY OF MEDICAL ONCOLOGY	No recommendation	No recommendation	Surveillance only	Digital anorectal exam, standard anoscopy, computed tomography magnetic resonance imaging
EUROPEAN SOCIETY OF SURGICAL ONCOLOGY				
EUROPEAN SOCIETY FOR THERAPEUTIC RADIATION AND ONCOLOGY				
NATIONAL COMPREHENSIVE CANCER NETWORK	No recommendation	No recommendation	Surveillance only	Digital anorectal exam, standard anoscopy
CENTERS FOR DISEASE CONTROL AND PREVENTION	No recommendation	No recommendation	Screening and surveillance	Digital anorectal exam, HPV testing
NEW YORK STATE DEPARTMENT OF HEALTH	No recommendation	All HIV infected adults	Screening only	Digital anorectal exam, anal Pap test, high resolution anoscopy
HIV MEDICINE ASSOCIATION OF THE INFECTIOUS DISEASE SOCIETY OF AMERICA	No recommendation	MSM, women with a history of abnormal cervical Pap tests, and all HIV-positive persons with general warts	Screening only	Digital anorectal exam, HPV co-testing, anal Pap test, high resolution anoscopy (HRA)
BRITISH HIV ASSOCIATION	No recommendation	No recommendation	Screening and surveillance	Digital anorectal exam, anal Pap test, high resolution anoscopy (HRA)

\*:Anal cancer and intraepithelial neoplasia screening: A review, I. L. Leeds et al.  
Gastrointest Surg 2016 January 27; 8(1): 41-51

**THD**HRStation

THD® HRStation is the ultimate system to perform High Resolution Anoscopy (HRA).

Specific features:

- HRA operative field magnification 19x, 39x, 58x
- Lesion identification and enhancement with acetic acid and Lugol
- Precise lesions mapping
- Easy biopsy and operative access
- Assessment of real degree of dysplasia
- Wide digital memory for visual comparison and follow up
- -SIL lesions treatment under direct vision

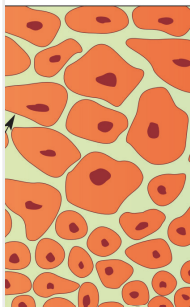
THD® Light-Scope Procto HRA completes the THD® HRStation system and eliminates the need for external lighting systems thanks to its powerful integrated LED light source.



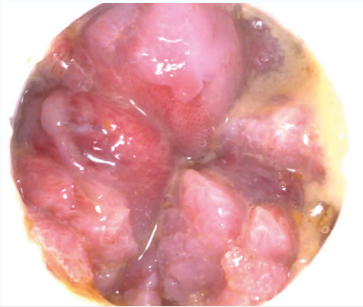
# LOW GRADE DISPLASIA AND PRECANCEROUS LESIONS

## LOW-GRADE SQUAMOUS INTRAEPITHELIAL LESION

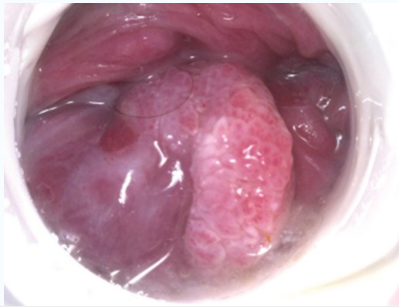
**L-SIL**



**CONDYLOMA**

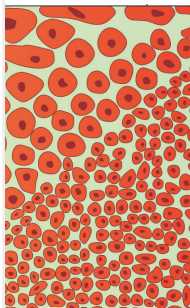


**AIN I**

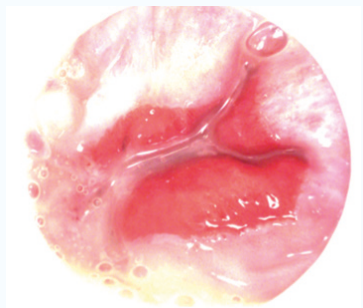


## HIGH-GRADE SQUAMOUS INTRAEPITHELIAL LESION

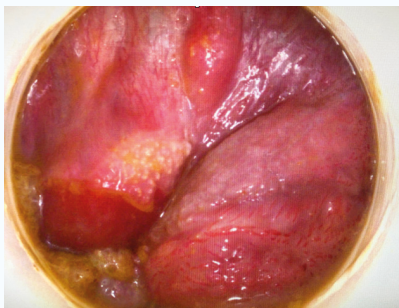
**H-SIL**



**AIN II**

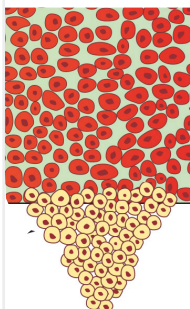


**AIN III**



## ANAL SQUAMOUS CELL CARCINOMA

**SCC**



**SISCCA**

(superficially invasive squamous cell carcinoma)



**INVASIVE CANCER**

